



Ashwell School Newsletter



Dates for your Diary

7th September 2011

September

- 5th First day of term
- 20th PTA - Happy Bags collection
- 21st PTA - AGM
- 23rd Harvest Festival, St Mary's
- 29th Individual photos from 8.30am

October

- 1st PTA - 80's Disco
- 4th Yr 6 - Wimpole Hall
- 4th Yr 3 & 4 - Verulamium
- 5th KTS Open Day for Yr 6
- 6th KTS Open Day for Yr 6
- 7th Yr 5 - British Museum
- 13th Parents Evening
- 14th PTA - Concert at Townsend House
- 17th Parents Evening
- 19th Parents Evening
- 24th -28th Half Term

November

- 5th PTA - Bonfire Night
- 25th Occasional Day - school closed

December

- 2nd Christmas Bazaar
- 7th Infants - Nativity Play
- 8th Yrs N, R, I & 2 - Theatre Trip The Junction, Cambridge
- 13th Juniors - Christmas Play 2.00pm
- 14th Juniors - Christmas Play 2.00pm
- 16th Last day of term finish at 1.45



Welcome back to school. I hope you have all had enjoyable holidays, despite the weather. The term has started well and the children seem to have settled happily back into school.

I am sending a brief newsletter early in the term as there are a few urgent items of information.

DIG DIG DIG!

This Saturday, the 10th September, is a very exciting day for Ashwell. Ashwell was selected to be the Hertfordshire village taking part in a region wide Cultural Olympiad project 'On Landguard Point'. The archaeology strand called 'Dig and Sow' is looking to put 34 mini archaeological digs, in 1metre square test pits around the village. All the pits will have a specially commissioned silver charm to sow back into the soil.

This is a very special opportunity to find out more about Ashwell's past from the pot fragments, bone metal objects and other 'finds'. This happens to link brilliantly with the whole school topic of Time Machines, and we hope that lots of school families will get involved. One of the test pits will be dug on the school meadow and pupils and parents are welcome to come and watch or join in.

We still need a few pits. If you think your garden would be suitable please contact

Sarah Talks on 742182 or sarah@bluebarracuda.com

We need **LOTS** of volunteer diggers, pot washers, recorders, soil sievers and supporters. If you feel you could give some time between 9 and 4 on Saturday please contact Sarah as before. There are jobs suitable for all ages and you don't have to live in Ashwell to help.

The day starts at 9am in the big hall at school, where Carenza Lewis (of Time Team) will give a brief introduction to the day. Digging starts as soon as possible, and at 4pm we all come back to school for a drink and to look at the finds. All welcome!

You can find out more from Sarah or www.onlandguardpoint.com

LOST PROPERTY

We have reorganised the storage of some of our teaching resources during the summer holiday and as a result **lost property** is now stored in the dining hall, in a white plastic box with a blue lid. Please come in and check it regularly as when the box is full I will be taking the contents to the recycling centre. I would be very grateful if you could write your child's name (including surname) on clothes, especially coats, jumpers and sweat-shirts which are often left lying around. Named items can quickly be returned to their owners. If the weather is fine, we will put lost property out in the playground on Fridays after school for you to check through.

Do I qualify for help towards school expenses?

To be able to get financial help, you need to be receiving one of the following benefits:

- Income Support*
 - Income-based Job Seeker's Allowance*
 - Income-related Employment Support Allowance*
 - Child Tax Credit, with a taxable income of no more than £16,190 and not in receipt of Working Tax Credit*
 - Pension Credit (Guarantee Credit)*
 - Support under Part VI of the Immigration and Asylum Act 1999*
 - Child Tax Credit - payable at a rate higher than the family element i.e. £545.34 (this is £1,095.00 if you also have a child under one year old)
 - Working Tax Credit, Housing Benefit, or Council Tax Benefit (not including second adult rebate)
 - Working Tax Credit during the four-week period immediately after employment finishes or after you start to work less than 16 hours per week
- * Some help is only available if you receive these specific benefits.

How do I apply?

You can apply online at:-

<http://www.hertsdirect.org/services/edlearn/canhelpl>

If you have any further queries, please contact the Education Benefits Team by email:

howcanwehelp@hertscc.gov.uk or call 0300 123 4048.

Happy Bags Collection

The PTA are organising another Happy Bags Collection. The bags will be sent home as soon as they arrive; spare bags will be available from the school office.

Please bring your bag to school **on Tuesday 20th September by 9.00am prompt.**

www.buy.at/ashwellschool

PTA News

The **Annual General Meeting** for the PTA is on **Weds 21st September** at 8 pm in the school dining hall. All parents are members of the PTA – please come along to the meeting if you can to find out about what the PTA have been doing and how we have spent the money they have raise. We are very keen to hear your ideas for events and fund raising activities, and would be very grateful for any help you can give, either as a committee member or an occasional helper. The committee usually meets once every six weeks or so in the evening to plan and organise events, and meetings are always relaxed and friendly. Whether you are a new parent or a longstanding one, we would be very pleased to welcome you onto the committee. Quite apart from the social aspects of PTA activities, the contribution they make to school funding is absolutely vital to the quality of education we are able to offer your children.

On **Friday October 14th** the **PTA Autumn Concert** will take place at Townsend House, with superb music provided by a string quartet including Nicky Goldscheider and Catherine Wilmers, and a delicious supper provided by the PTA. Tickets will be on sale shortly from the school office.

On **Saturday October 1st**, (in complete contrast!), the PTA are holding an **'80s Disco**. Tickets will be available from the office soon.

The Village Quiz will take place in February 2012, rather than in the autumn term.

HARVEST FESTIVAL

Our harvest festival will this year take place at St Mary's Church on Friday 23rd September at 2.30.

All parents are warmly invited to attend the short service during which children will present harvest gifts, which will later be taken to Herts Young Homeless Group in Hitchin. If you would like to do so, please send your harvest gifts on the Friday morning.

Items that are most useful include:

- * Dried pasta & rice
- * Any tinned/jarred food items - Baked beans, spaghetti, sweetcorn, soup, fruit, jam etc.
- * Tea, coffee, drinking chocolate, sugar
- * Toiletries

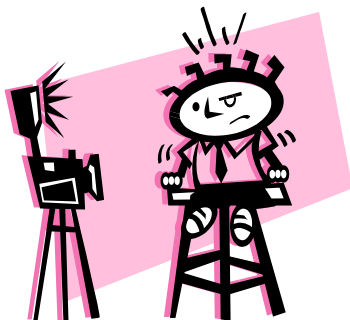
After the service, please collect your child from the school playground rather than take them home straight from the church to ensure that no-one gets lost.

I would be grateful for volunteers to transport the harvest gifts to Hitchin on Monday 26th September.

Governor vacancy

We have a vacancy for a Parent Governor; details are being sent home by separate letter with a nomination form this week. All nominations must be in by 9.00am on Wednesday 21st September.

Photographs



A professional photographer will be visiting the school on the morning of Thursday, 29th September, to take individual photographs. During school time she will also take family groups of brothers and sisters at this school. If you want other groups taken, including older or younger siblings or parents, please go to the Big Hall between 8.30 and 9.00am, when the photographer will deal with people on a first-come, first-served basis.

Term Dates

Autumn Term 2011

First day of term	Monday 5 th September
Half term	Monday 24 th Oct – Friday 28 th Oct
Occasional Day	Friday 25 th November
Last day of term 1.45pm	Friday 16 th December – finish at

Spring Term 2012

First day of term	Wednesday 4 th January
Half term	Monday 13 th Feb – Friday 17 th Feb
Last day of term	Friday 30 th March

Summer Term 2012

First day of term	Tuesday 17 th April
Bank holiday	Monday 7 th May
Half term	Monday 4 th June – Friday 8 th June
Staff Training Day	Friday 15 th June
Last day of term	Friday 20 th July – finish at 1.45pm