



# Ashwell School Newsletter

## Dates for your Diary

10th November 2010

### November

- 11th PTA meeting 8pm
- 12th Individual Photographs
- 18th - 23rd Book Fair
- 19th Children In Need  
PTA - Village Quiz
- 26th PTA - Let them eat cake

### December

- 1st Christmas Bazaar
- 8th Infant Christmas Play
- 9th N, R, Yr 1 & 2 - Theatre Trip  
The Junction Cambridge
- 11th 51st Turkey Dinner
- 14th Christmas Play - Juniors
- 15th Christmas Play - Juniors
- 17th Last day of term finish at 1.45

### January

- 5th First day of term
- 14th Let them eat cake
- 22nd PTA - Burns Supper

### February

- 11th PTA - Let them eat cake  
**Deadline for Reception applications**
- 18th Yr 6 Singing Festival at KTS
- 21st -25th Half Term

### March

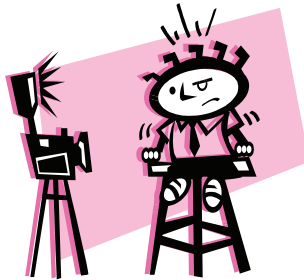
- 18th Red Nose Day  
PTA - Let them eat cake
- 19th PTA - Village Quiz
- 30th Yr 6 - House of Parliament

### April

- 1st **Deadline for Nursery applications**
- 8th Last day of term

## Dear Parents

### Photographs



A professional photographer will be visiting the school this Friday morning, 12th November, to take individual photographs of the pupils. During school time she will also take family groups of brothers and sisters at this school.

If you want other groups taken, including older or younger siblings or parents, please go to the Big Hall between 8.30 and 9.00am, when the photographer will deal with people on a first-come, first-served basis.

Please do not bring younger children in during school hours.

### Children in Need

This year's Children in Need Appeal is on Friday 19<sup>th</sup> November, and the slogan is 'Show your spots, let's raise lots'. Children (and staff!) are invited to wear something spotty to school for the day, and pay 50p (or more) towards the appeal. You might also like to sponsor your children to wear something outlandishly spotty. There will also be some spot related activities going on during the day to add to the fun.



## *Bookfair*



We will be holding our annual School Bookfair from Wednesday 17<sup>th</sup> November to Tuesday 23<sup>rd</sup> November. There will be 4 double cases of books, appealing to all ages from pre-school to pre-teen, and to a wide range of tastes and interests. The Bookfair gives a valuable opportunity for our children to choose and enjoy books, and certainly stimulates interest in reading generally.

Scholastic Books give the school 60% commission on all books sold: the boost this will give to the school's book stocks, particularly during these difficult financial times, will be invaluable. I hope that you will be able to support the Bookfair again this year, perhaps with Christmas in mind.

If you would like to donate a book to the library, please ask the Bookfair Helper for details of a wish list.

The Bookfair will be taking place in the dining hall. All the children will have an opportunity to browse through and purchase the books on the first day – Wednesday 17<sup>th</sup> November. The Bookfair will also be open for sales from 2.45 – 4pm on Wednesday, Thursday, Friday and Monday for parents, and children who have brought money to spend. If you would like your child to buy a book from the fair, please send in some money in a named purse. Parents of younger children may prefer to ask the teacher to look after the purse.

The accompanying leaflet shows a small selection of the books that will be on offer and you can order from that, if you prefer.

## *Romania*

Sarah Jones spent half term visiting schools in Romania with a number of other Hertfordshire teachers as part of the 'Teachers' International Professional Development' programme. They were particularly focusing on creative learning, and Sarah had some fascinating experiences which she will be sharing with Ashwell children and staff. She has established a link with a kindergarten in eastern Romania and we hope the pupils from the two schools will be able to exchange letters, pictures and emails. I think it will be very interesting for our children to find out about Romanian children's lives, both at home and at school.

## *HATs*

Our HATs childcare club continues to flourish. The playleaders would be very grateful for donations of any unwanted (but still in good condition) construction kits or dressing up outfits to add to their stock of toys.

They have also asked me to remind parents that they **must sign children in to Breakfast club**, and not just drop the children off in the playground. Please could parents also let us know if their child(ren) are not coming for some reason even though they have been booked in for a session before or after school.

There may be a brief article about HATs in this week's Royston Weekly News.

## *Financial Help*

If you think that you may qualify for **free school meals** please apply, even if your child prefers to have a packed lunch. You would be under no obligation to take up the meals, but being registered as eligible for them may qualify you for a number of other financial benefits such as free school milk, free music lessons, and help in paying for out of school activities.

### *Do I qualify for help towards school expenses?*

To be able to get financial help, you need to be receiving one of the following benefits:

- Income Support\*
- Income-based Job Seeker's Allowance\*
- Income-related Employment Support Allowance\*
- Child Tax Credit, with a taxable income of no more than £16,190 and not in receipt of Working Tax Credit\*
- Pension Credit (Guarantee Credit)\*
- Support under Part VI of the Immigration and Asylum Act 1999\*
- Child Tax Credit - payable at a rate higher than the family element i.e. £547.50 (this is £1,095.00 if you also have a child under one year old)
- Working Tax Credit, Housing Benefit, or Council Tax Benefit (not including second adult rebate)
- Working Tax Credit during the four-week period immediately after employment finishes or after you start to work less than 16 hours per week

\* **Some help is only available if you receive these specific benefits.**

### *How do I apply?*

You can apply online quickly, it should take around 10 minutes to complete.

<http://www.hertsdirect.org/scholearn/canhelp/>

If you have any questions, would like help completing the online form, or you would prefer an adviser to complete it on your behalf, please call our Customer Service Centre on 0300 123 4048.

## *Governors*

The successful candidates in the recent Parent Governor elections were Heidi Hall and David Cook. Two new Community Governors have been appointed as well: Steve Thorn and Jill Field. I am delighted to welcome (or welcome back) all four governors.

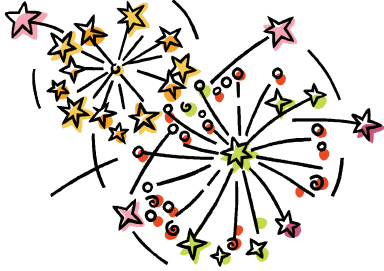
[www.buy.at/ashwellschool](http://www.buy.at/ashwellschool)

Please take a look at this website, it could save you money and at the same time make money for Ashwell School.

## *Holidays*

Can I once again appeal to you not to arrange holidays during the school term, though I know that the lower prices are tempting. There is no legal entitlement to take children out of school, and I know that some local headteachers refuse to give permission for any term time holidays. It is very important both that children do not miss lessons, and that you show them how much you value their education.

## *PTA News*



The PTA Fireworks Night was a great success. Many, many thanks to the PTA committee, and to other helpers, particularly to Duncan Wardrop, Toby Dean and Richard Court, all ex - parents who devote much of the weekend every year to building the bonfire, setting up and letting off the fireworks and clearing up afterwards. I am sure that all those who were there will agree that it was a spectacular show. Many thanks also to Hinxworth

Parish Council for allowing us to use the Recreation Ground.

Forthcoming PTA events include the **Village Quiz** on Friday 19<sup>th</sup> November: a light-hearted and enjoyable evening with a bar and a cooked supper (£10 a head, including food); 7.30 for 8.00, and the **Turkey Dinner**, the details of which you should have received in a separate letter. The PTA would be very grateful for raffle prizes for the Quiz, and contributions to the Christmas Hamper to be raffled at the Turkey Dinner

Please bring any contributions to the school office.

## *Reminder*

The school library is open for parents and children every Friday afternoon from 3.15 to 3.45. This may be particularly helpful for parents of younger children who are not old enough to use the library independently during the school day, but all families are welcome.

## *Before and After school*

I would be very grateful if parents of children in Classes 1, 2W and 2E could wait in the playground with their children until the classroom doors open at 8.50, unless it is raining. There are nearly 80 children altogether in those three classes, and parents and children waiting in the foyer, on the stage and in the corridor cause a lot of congestion. Once you have settled your child into the class, please can you make a swift exit so that the school day can start calmly and promptly.

At the end of the school day, you will have noticed that I have asked teachers in Years 1, 2 and 3 to bring their children out into the playground for you to collect. Please can you come over to the teacher, or wave so that they know you are there and can safely let your child go.

Can I also remind parents that they are not allowed to drive into the school through the back gates before or after school because of the danger caused to pedestrians – the drive has to be reserved for the use of school buses and taxis.

# Christmas



Christmas is fast approaching and as usual we will be marking it in some style:

- \* Wednesday 1<sup>st</sup> December 2pm : School Christmas Bazaar
- \* Wednesday 8<sup>th</sup> December 11am: ‘Busy, Busy, Bethlehem’: a Nativity play presented by Years 1 and 2 in the Hall.
- \* Tuesday 14<sup>th</sup> December: 11am Christmas Songs presented by Foundation Stage pupils in their classroom.
- \* Tuesday 14<sup>th</sup> December: 2.00pm ‘The Snow Queen’ presented by Years 3, 4, 5 and 6 in the Hall.
- \* Wednesday 15<sup>th</sup> December: 11am Christmas Songs presented by Foundation Stage pupils in their classroom.
- \* Wednesday 15<sup>th</sup> December: 2.00pm ‘The Snow Queen’ presented by Years 3, 4, 5 and 6 in the Hall.
- \* Friday 17<sup>th</sup> December: Year 6 Fancy Dress parade followed by the children’s Christmas Dinner; school ends at 1.45pm.
- \* Phew!

## 120 Club

Prize		September
1st	£15.00	73 Karen Mills
2nd	£10.00	39 Tracey Luggeri
3rd	£5.00	45 J&M McCarthy

## *A message from - Ashwell Tennis Club*

### TENNIS COACHING FOR ASHWELL SCHOOL CHILDREN!



The Ashwell Tennis and Sports Club are talking to a tennis coach about running some children's classes on Ashwell's new tennis courts. These wouldn't start until some warmer weather is with us - probably April - and are likely to be on a Monday or Wednesday afternoon after school. At this stage they are keen to gauge the level of interest so we can work out how best to structure the sessions. This is a great opportunity for everyone and we hope that lots of people will be interested.

If you have children aged 5-14 who would like to join in on group tennis lessons (estimated cost around £6 per child an hour), could you register your interest by emailing Greg Tustain at [gregt@bmt.uk.com](mailto:gregt@bmt.uk.com) before 21/11/10 with:

- your name/contact details
- your child(ren)'s name(s)/age(s)

Greg will then be in touch again when they have a better idea of numbers.

## *Ashwell School Ultimate Plum Puddings*



We have sold these excellent puddings for several years and they have been very popular. The company we buy from is a small craft manufacturer based in Cumbria.

The Puddings are labelled with the Ashwell School logo and part of the profits will come to Ashwell School PTA.

**They are a Christmas treat, which at the same time helps raise money for our school.**

The prices are comparable with other good quality Christmas puddings in the shops.

We have purchased 4 boxes of puddings and will sell them on a first come first served basis. If you would like to order please complete the order form below and **return it to Ashwell School.**

## *Ashwell School Ultimate Plum Pudding Order Form*

<b>Item</b>	<b>Price</b>	<b>Quantity</b>	<b>Total Price</b>
<b>Plum Pudding 454g</b>	<b>£6.00</b>		
<b>Plum Pudding 908g</b>	<b>£9.00</b>		
<b>TOTAL</b>			

I enclose payment of £\_\_\_\_\_ (Please make cheques payable to **Ashwell PTA.**)

Name .....

Child's name ..... Class .....

# Headlice



There have been **several** reported incidents of head lice in the school recently particularly from year 1.

Can we please remind parents to check their child's hair at regular intervals, ideally each time it is washed, using the process listed below.

## The 5-Step Detection Process

1. Wash the hair well and towel dry. It should be damp, but not dripping wet.
2. Comb the hair with an ordinary comb to remove the tangles.
3. Using a plastic detection comb (nit comb), start with the teeth of the comb touching the skin of the scalp at the top of the head. Comb slowly towards the end of the hair, keeping the teeth of the comb in contact with the scalp for as long as possible. Look carefully at the teeth of the comb in good light. Wiping the comb on a tissue will help to see if any lice have been removed.
4. Repeat this process for 10-15 minutes, covering the scalp and hair in all directions.

Keep checking the comb. If there are head lice, you will find one or more lice on the teeth of the comb or on the tissue.

Parents who would like further advice on checking for head lice can gain information from [www.headliceadvice.net](http://www.headliceadvice.net) or ask for guidance.



## Ashwell Christmas Fair

**4th December**  
**9.30 – 1.00 pm**  
**Parish Church**

**Arts and Crafts**  
**Cakes and Cards**  
**Presents and Prizes**  
**Carols**  
**Refreshments**

*More Christmas Presents and other attractions  
are in The Parish Church Room*

*And the Museum will be open*



## Donations for Consumables

It is not too late to make the £10 donation for consumables and if you are a UK tax payer we can reclaim the tax, giving an extra 28p for every £1.00 you donate.

If you have lost your form spares are available from the school office.

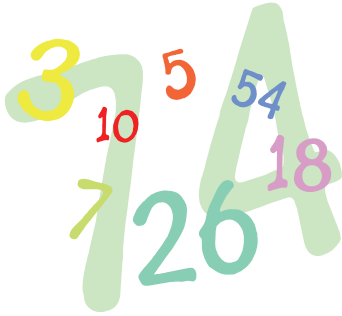
## Librarians

We are looking for new librarians to join our current team. We have spaces on alternate Wednesday and Thursday afternoons.

If you are interested in volunteering please contact the school office.



## Maths Week - November 22nd to 26th



During this week we will be organising some special activities to enrich children's maths experience, allow them to put their developing skills to practical use and have some fun. These will include an outdoor maths trail and a 'Fun of The Fair' carousel of activities in the Hall. The more adults there are to support them, the more the children will gain from the activities, **so if you could spare an hour or two during the week to help out**, please give your name to the school office as soon as possible. No particular maths expertise required!

## Music Notice board

### FOR SALE



Acoustic Guitar

Excellent condition

Price: £00.00

Contact: Fred Bloggs

Tele: 01234 567891

There is a new section on the Music Notice Board for parents and staff to advertise musical instruments & music books for sale. (**Not** for general items e.g. bikes, climbing frames.)

To use the notice board please bring all adverts to the office, clearly indicating what is for sale, the price, and your contact telephone number (see example) plus a 50p contribution to the school.

Notices will be taken down after 1 month.

For people wishing to purchase items please contact the seller **not** the school office.

Yours sincerely,

Kate Oxley

Headteacher

# Ashwell Village Quiz 2010 Friday 19th Nov

**Doors Open 7.30pm for 8.00pm Start**

**Tickets £ 10.00 On The Night**

**Supper Inc In Ticket Price**

**Ashwell Village School**

**Food / Drink / Raffle / Prizes / Laughter**





# Shop online this Christmas and help raise funds for **Ashwell School**

Over 100 retailers will make a donation, on average each basket earns £2.50 for us. Over 1 million products.



Find us now at:

[www.buy.at/aswellschool](http://www.buy.at/aswellschool)

**every purchase counts**



You must adhere to the 'terms of use' explained on the website and follow the instructions within the help section. All offers are subject to change without notice. Most commissions are only available if the purchase is completed online. Subsequent visits to a retailer's site need to be made via the webshop for commission to be payable.